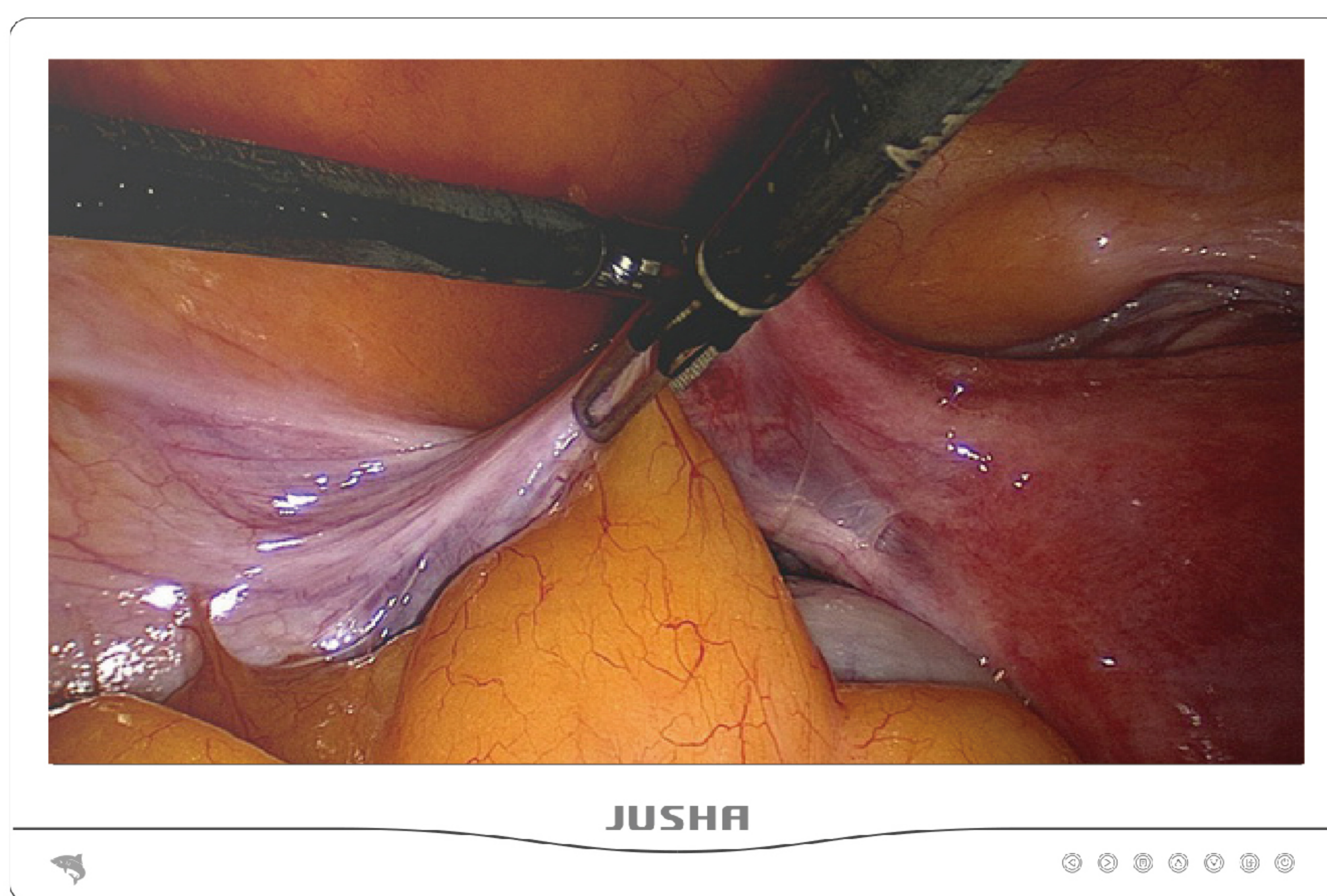


# E240AG



JUSHA endoscopic operating room professional displays adopt widescreen full HD LCD panels with accurate color rendering, excellent layering, smooth and dynamic images and an expanded visual scope, which meet the current rapidly changing demands for medical displays and is able to provide clear and precise observation of surgical sites in minimally invasive surgery (MIS). This product is perfectly suited to meet the requirements of various kinds of endoscopic displays or operating room and ICU displays due to its white frame, water-proof design, antibacterial treatment, compliance with electromagnetic compatibility regulations and multiple video input/output interfaces.

## Product Features

### 1. Accurate Color Rendering

JUSHA endoscopic operating room professional displays utilize 12BIT technology, which allows for over 68.7 billion colors to be shown linearly, thus accurately rendering the color of human tissue in minimally invasive surgery, enabling surgeons to make more accurate judgements.

### 2. Excellent Layering

JUSHA endoscopic operating room professional displays use medical LCD panels with the highest definition. The panels possess fine color, high brightness and high contrast, thus clearly representing each layer of tissue in surgery in its proper order, providing clear surgical images for clinical practices.

### 3. Smooth and Dynamic Images

The response time of endoscopic operating room professional displays is less than 30ms, thus ensuring the smooth display of surgical images from standard definition to high definition, as well as showing indications of hemorrhage and other important indicators during surgery, with remarkable clarity and without any ghosting or shaking.

### 4. Compliance with Operating Room Sterilization and Anti-interference Requirements

JUSHA endoscopic operating room professional displays adopt a white, dust-free design, which complies with operating room sterilization requirements for surgical equipment. The metal-encased design can effectively prevent dust and fluid contamination during surgery. The metal casing body and the built-in shielding circuit can effectively prevent interference to the monitor from electronic surgical equipment, such as a high frequency electrotome, ensuring the stability of the surgical display.

### 5. Multiple Interface Types

JUSHA endoscopic operating room professional displays have the compatibility for multiple analog and digital signals, and are perfectly compatible and suitable with the camera systems of the world's major rigid and soft lens manufacturers, fully meeting the demands of a variety of brands and equipment.

## Specification

Model No.	E240AG
Backlight	LED
Size	23.8"
Type (Color/Monochrome)	Color
Active Display	527.04 (H) x 296.46(V) mm
Resolution	1920×1080(FHD1080p)
Aspect ratio	16:9
Pixel Pitch	0.2745 (H) x 0.2745 (V)mm
Response Time	14ms(G to G)
MAX Brightness	400cd/m <sup>2</sup>
MAX Calibration Brightness	320cd/m <sup>2</sup>
Typical Brightness	300cd/m <sup>2</sup>
Contrast Ratio	1000:1
Color Tone	16.7 Million
Colour bit depth (LUT)	68.7 Billion Colors(12bit)
View angle	≥178°
Sensor	Backlight Sensor
Gamma presets	2 GAMMA CURVES&DICOM
LUT	GAMMA2.0,GAMMA2.2,DICOM
Input Interface	DVI-I,VGA,CVBS,S-VIDEO,YPbPr,RGBS,SDI,DC IN 24V
Video Input	DVI-I,VGA,CVBS,S-VIDEO,YPbPr,RGBS,SDI
Video Output	DVI-I,CVBS,S-VIDEO,YPbPr,RGBS,SDI
PxP	PIP,POP(up to 2-screen simultaneous display)
Mirro	√
Power Output	DC 5V 0.5A(USB-A)
Power Requirements	100~240VAC, 50/60Hz
Max Power Consumption	35W
Typical Power Consumption	≤32W
Cabinet color	White
Dimensions	565.3(W)x460.3(H)x245(C)mm
Dimensions(Without Stand)	565.3(W)x375.3(H)x65(C)mm
Net Weight(With Stand)	11kg
Net Weight(Without Stand)	8.5kg
Hole Spacing	VESAStandard: 100*100mm
Gross Weight (with Packing)	16.2kg
Packing size	693mmx273mmx510mm
Certifications	CCC,CE,CQC
Osd Languages	Chinese,English